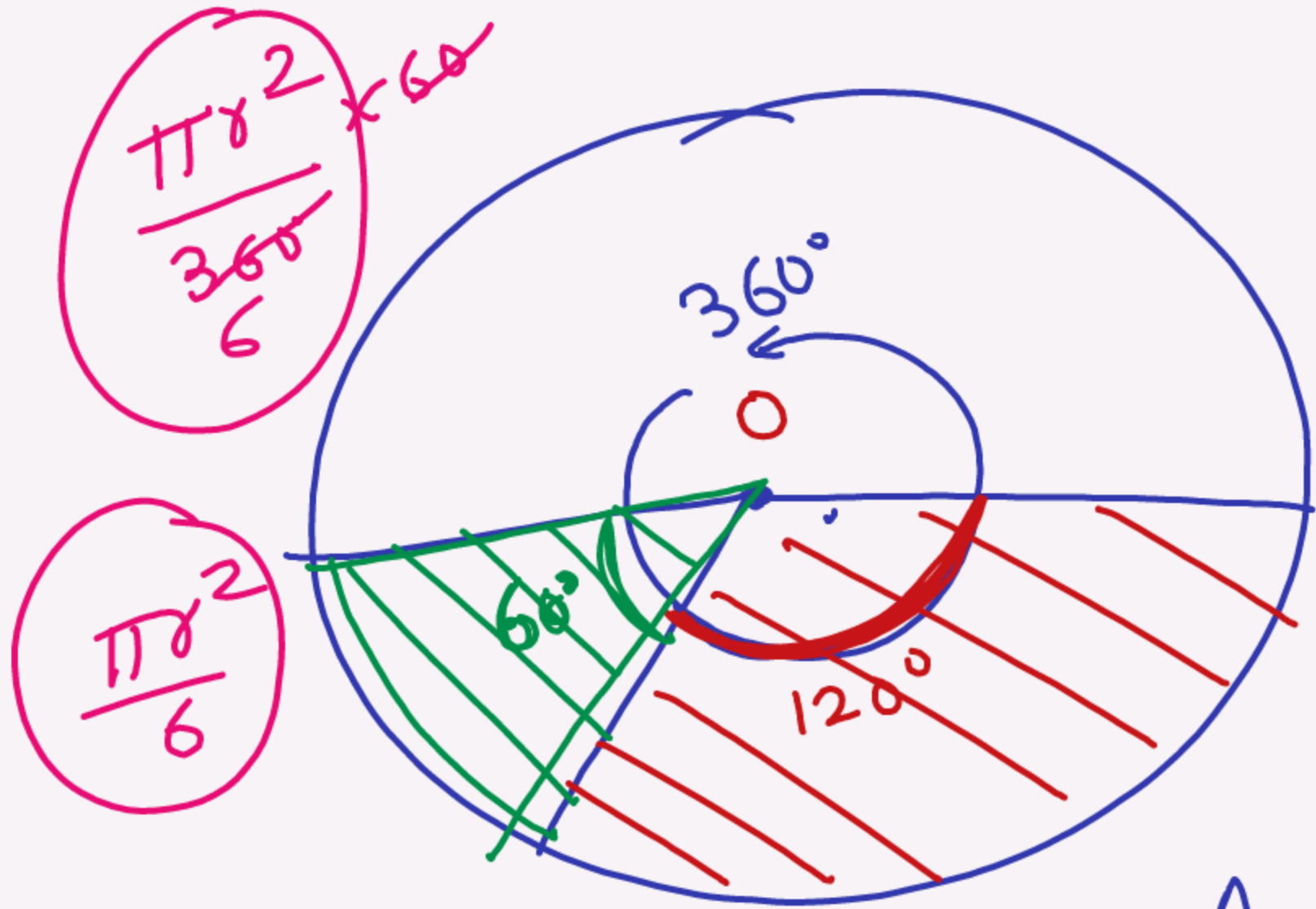


$$AB = \text{Diameter (दiameter)} = 2r$$



$$\frac{\pi r^2}{360} \times 60$$

$$\frac{\pi r^2}{6}$$

$$\frac{A_{\text{sector}}}{360} \rightarrow \boxed{\pi r^2}$$

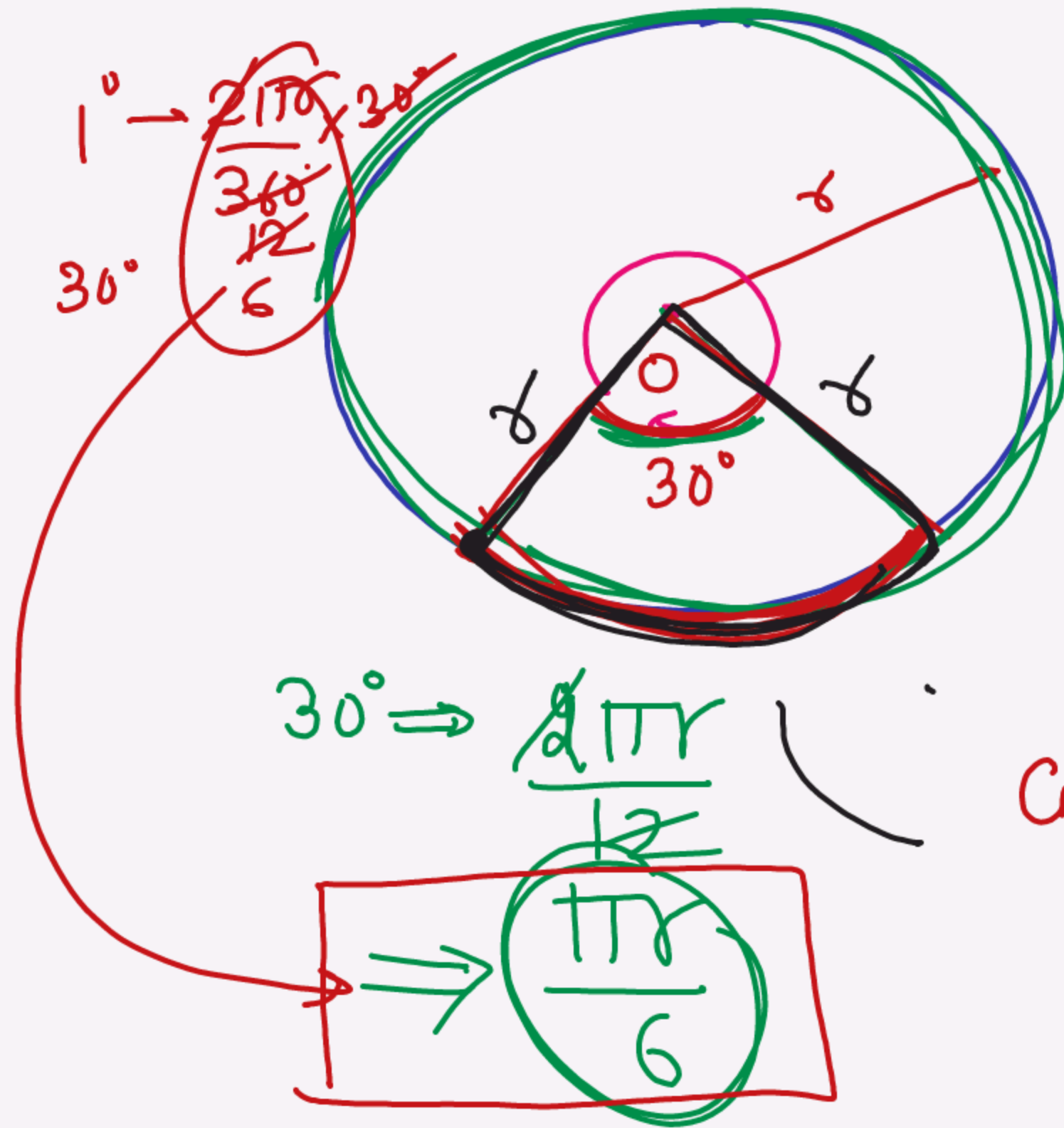
$$A = \pi r^2 \frac{360^\circ}{360^\circ}$$

$$360^\circ \rightarrow \pi r^2$$

$$1^\circ \rightarrow \frac{\pi r^2}{360} \times 120^\circ$$

$$A = \frac{\pi r^2}{3}$$

क्षेत्रफल (segment)



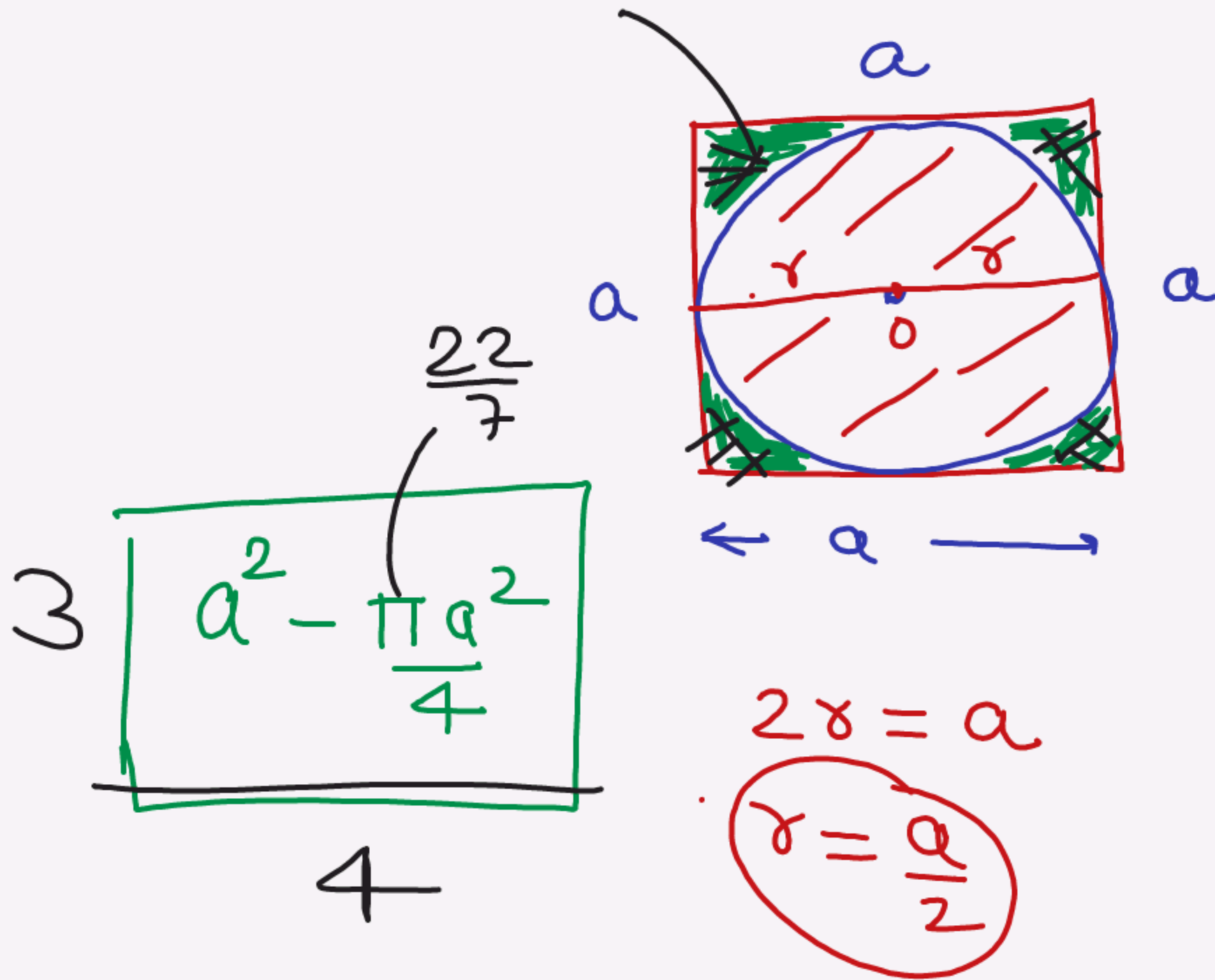
Circle

Circumference
 $4\pi r$

360° \rightarrow $2\pi r$

arc \rightarrow $\frac{4\pi r}{360} \Rightarrow \frac{\pi r}{90}$

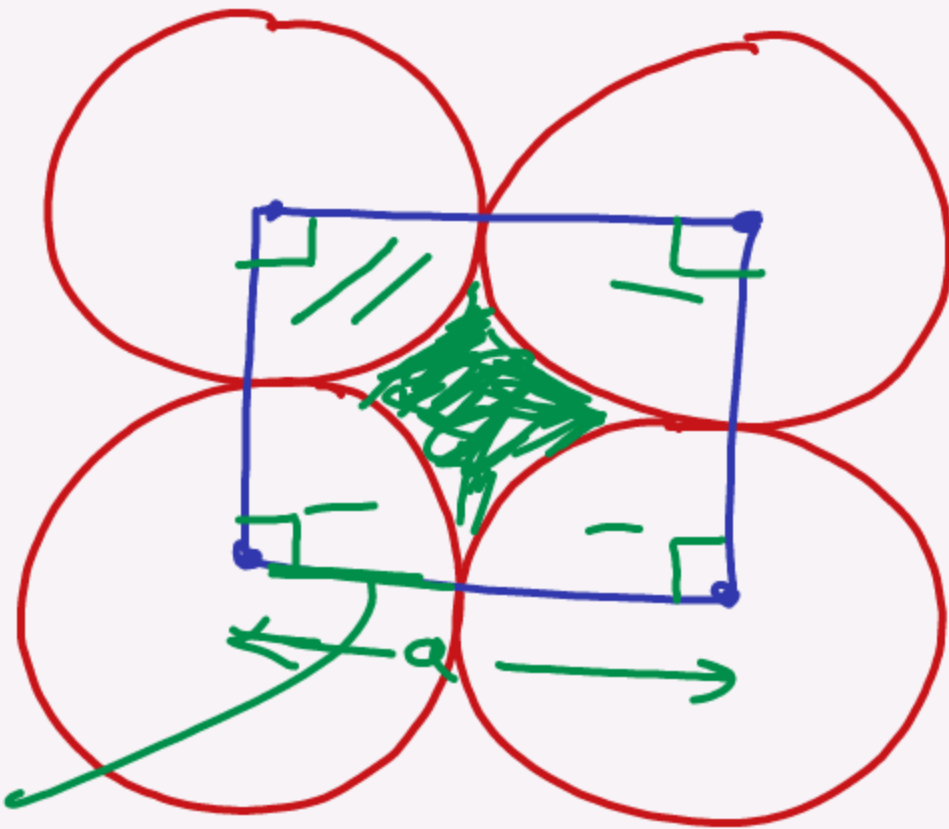
Circumference = $\frac{\pi r}{6} + 2r$



Area of
Circle
 घृत्त क्त क्षि

$$\pi r^2$$

$$\text{Area} = \pi \frac{a^2}{4}$$



$$\pi r^2$$

2/19

$$a^2 - \frac{\pi a^2}{4}$$